

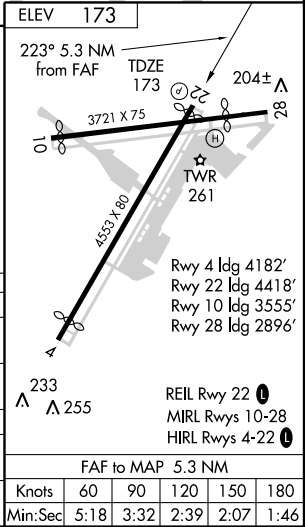
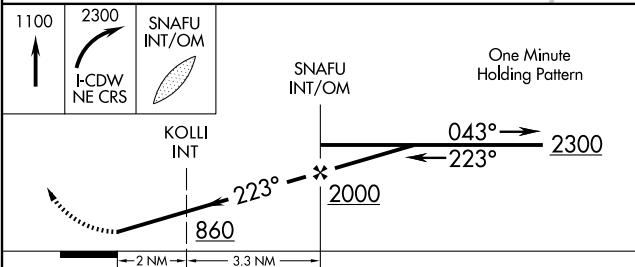
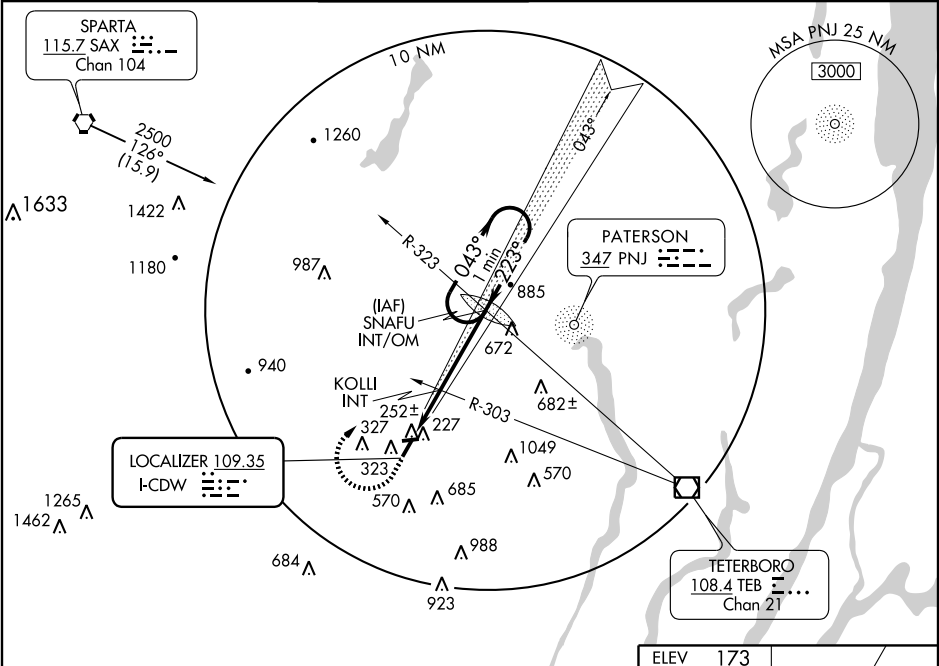
LOC I-CDW	APP CRS	Rwy ldg	4418
109.35	223°	TDZE	173
		Apt Elev	173

LOC RWY 22
CALDWELL / ESSEX COUNTY (CDW)

▼
▲ NA

MISSED APPROACH: Climb to 1100 then climbing right turn to 2300 via I-CDW NE course to SNAFU Int/OM and hold.

ATIS 135.5	NEW YORK APP CON 127.6 379.9	CALDWELL TOWER ★ 119.8 (CTAF) 0	GND CON 121.9	CLNC DEL 121.1	UNICOM 122.95
---------------	---------------------------------	------------------------------------	------------------	-------------------	------------------



CATEGORY	A	B	C	D
S-LOC 22	860-1 687 (700-1)		860-2 687 (700-2)	860-2¼ 687 (700-2¼)
CIRCLING	940-1 767 (800-1)	980-1¼ 807 (900-1¼)	980-2¼ 807 (900-2¼)	1080-3 907 (1000-3)
KOLLI INT MINIMUMS				
S-LOC 22	540-1 367 (400-1)		540-1¼ 367 (400-1¼)	
CIRCLING	940-1 767 (800-1)	980-1¼ 807 (900-1¼)	980-2¼ 807 (900-2¼)	1080-3 907 (1000-3)

NE-2, 31 JUL 2008 to 28 AUG 2008

NE-2, 31 JUL 2008 to 28 AUG 2008