

ILS or LOC RWY 16
WHITE PLAINS/WESTCHESTER COUNTY (HPN)

T For inoperative MALSR, increase S-LOC 16
A Cats A, B visibility to RVR 5000.



MISSED APPROACH: Climb to 1000, then climbing left turn to 2300 via heading 090° and CMK R-200 to CMK VOR/DME and hold.

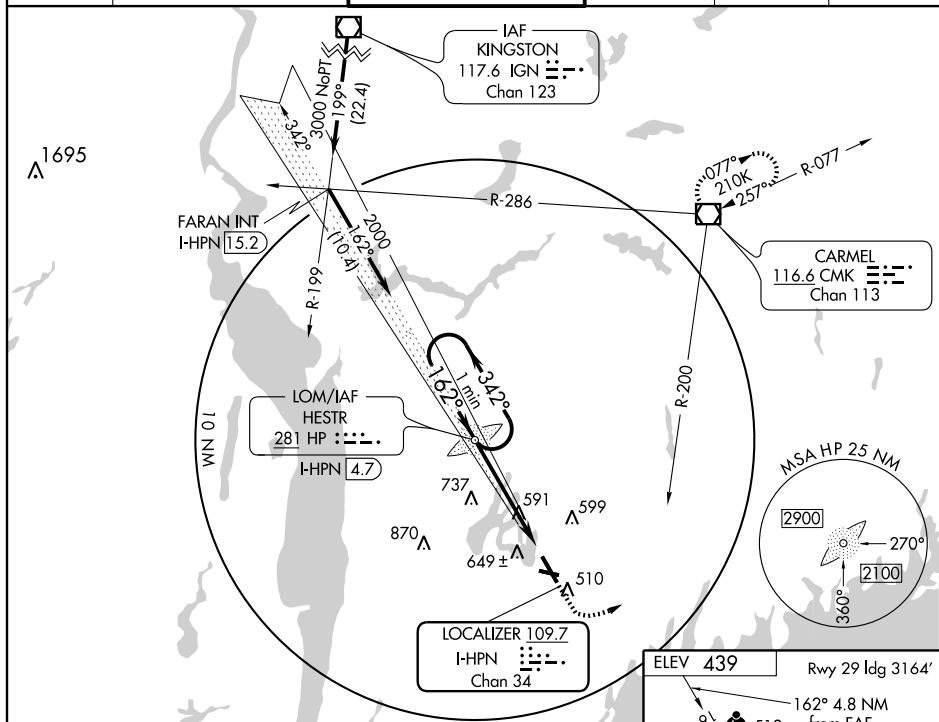
ATIS
133.8

NEW YORK APP CON
126.4 120.8 257.65

WESTCHESTER TOWER ★
118.575 (CTAF) 0 284.65

GND CON
121.825

CLNC DEL
127.25

UNICOM
122.95

NE-2, 31 JUL 2008 to 28 AUG 2008

One Minute Holding Pattern

LOM
I-HPN 4.7

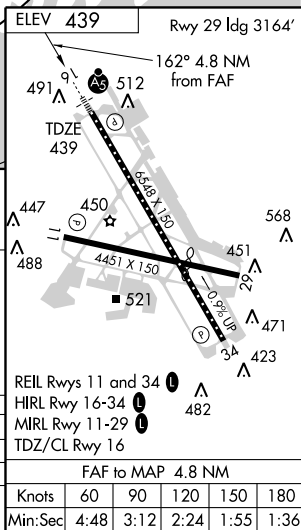
1000

23

CMK


HDG 090°
CMK R-200

2000
S 3.00°
CH 55

[illegible]

WHITE PLAINS, NEW YORK
Amdt 22G 07298

WHITE PLAINS/WESTCHESTER COUNTY (HPN)
ILS or LOC RWY 16

41°04'N - 73°43'W