

LOC I-EEN <b>108.9</b>	APP CRS <b>018°</b>	Rwy ldg <b>6201</b> TDZE <b>488</b> Apt Elev <b>488</b>
---------------------------	------------------------	--

ILS or LOC RWY 2  
KEENE/DILLANT-HOPKINS (EEN)

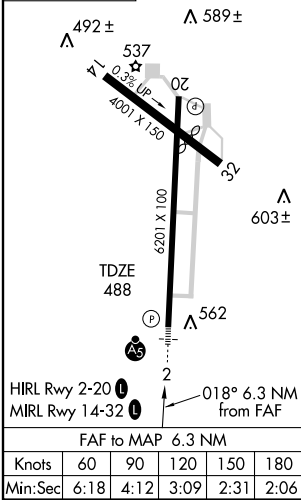
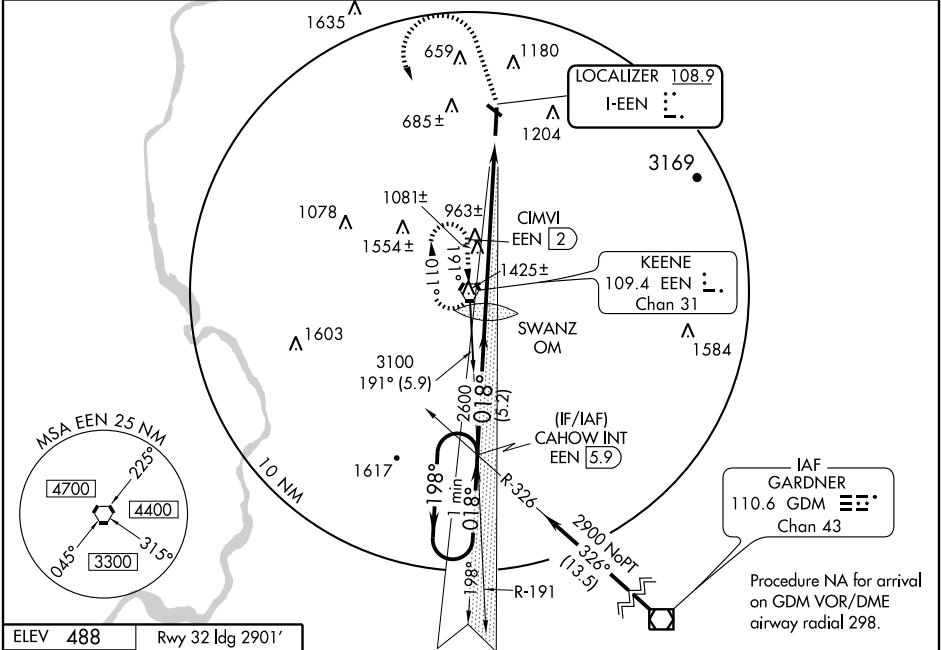
**▼** If local altimeter setting not received, use Orange Muni altimeter setting and increase all DAs/MDAs 60 feet. Inoperative table does not apply to S-LOC Cat A. For inoperative MALSRS, increase S-LOC Cat B visibility to 1½. CIMVI FIX minimums: Inoperative table does not apply to S-LOC Cats A and B.


**▲ NA**

**MALSRS**

**MISSED APPROACH:** Climb to 1600 via heading 006° then climbing left turn to 3000 direct EEN VORTAC and hold.

AWOS-3 <b>119.025</b>	BOSTON CENTER <b>123.75 338.2</b>	UNICOM <b>123.0 (CTAF) 0</b>
--------------------------	--------------------------------------	---------------------------------



One Minute Holding Pattern		CAHOW INT		SWANZ OM		1600 ↑ HDG 006°		3000 ↶		EEN  109.4	
2900 ← 198°		018° →		018°		2588		CIMVI EEN 2		EEN 5.7	
GS 3.00° TCH 56				2600		* 1760				* LOC only	
VGSI and ILS glidepath not coincident.		5.2 NM		2.5 NM		3.8 NM					
CATEGORY	A		B		C		D				
S-ILS 2	847-1 359 (400-1)										
S-LOC 2	1760-1¼		1272 (1300-1¼)		1760-2 ½		1272 (1300-2½)				
CIRCLING	1760-1¼ 1272 (1300-1¼)		1760-1½ 1272 (1300-1½)		1760-3		1272 (1300-3)				
CIMVI FIX MINIMUMS											
S-LOC 2	1060-1		572 (600-1)				1060-1¼ 572 (600-1¼)				
CIRCLING	1380-1¼ 892 (900-1¼)		1500-1½ 1012 (1100-1½)		1500-3 1012 (1100-3)		1680-3 1192 (1200-3)				

NE-1, 31 JUL 2008 to 28 AUG 2008

NE-1, 31 JUL 2008 to 28 AUG 2008