

LOC/DME I-BOS	APP CRS	Rwy Idg	8851'
110.3	036°	TDZE	18
Chan 40		Apt Elev	19

BOSTON/GENERAL EDWARD LAWRENCE LOGAN INTL (BOS)
ILS or LOC RWY 4R

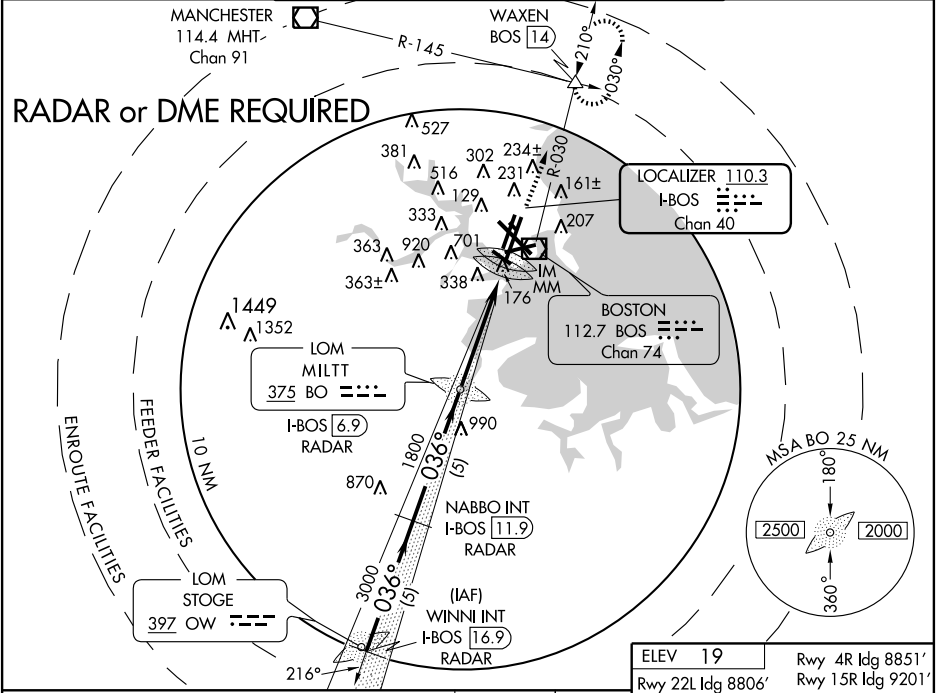
⚠ CATs C and D circling not authorized west of Rwy 4L and 15R.

⚠ ** Inoperative table does not apply.

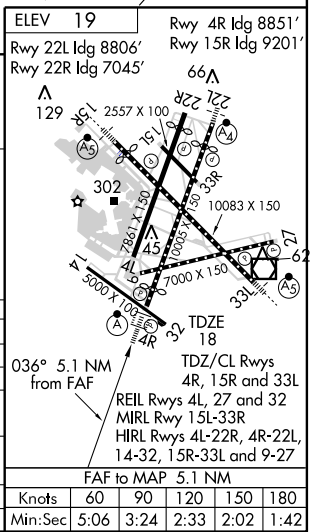
ALSF-2

MISSED APPROACH: Climb to 3000 via BOS R-030 to WAXEN Int/BOS 14 DME and hold.

ATIS	BOSTON APP CON	BOSTON TOWER	GND CON	CLNC DEL
ARR 127.875	120.6 263.1	Rwys 4R-22L, 9-27 Rwys 4L-22R, 14-32, 15R-33L, 15L-33R	132.225 257.8 121.9	121.65 257.8
DEP 135.0				



WINNI INT I-BOS [16.9] RADAR	NABBO INT I-BOS [11.9] RADAR	MILTT LOM I-BOS [6.9] RADAR	3000 BOS R-030 112.7	WAXEN △
4000 036° 3000 1800 1723 1800 MM IM GS 3.00° TCH 51* *Displ Thld				
5 NM 5 NM 4.7 NM 0.2 NM 0.2 NM				
CATEGORY	A	B	C	D
S-ILS 4R	218/18 200 (200-½)			
S-LOC 4R	440/24	422 (500-½)	440/40	422 (500-¾)
CIRCLING	640-1	621 (700-1)	640-1¾ 621 (700-1¾)	640-2 621 (700-2)
APPROACH MINIMA WHEN CONTROL TOWER REPORTS TALL VESSELS IN APPROACH AREA				
S-ILS 4R**	359/60 341 (400-1¼)			
S-LOC 4R**	440/60 422 (500-1¼)			



NE-1, 31 JUL 2008 to 28 AUG 2008

NE-1, 31 JUL 2008 to 28 AUG 2008